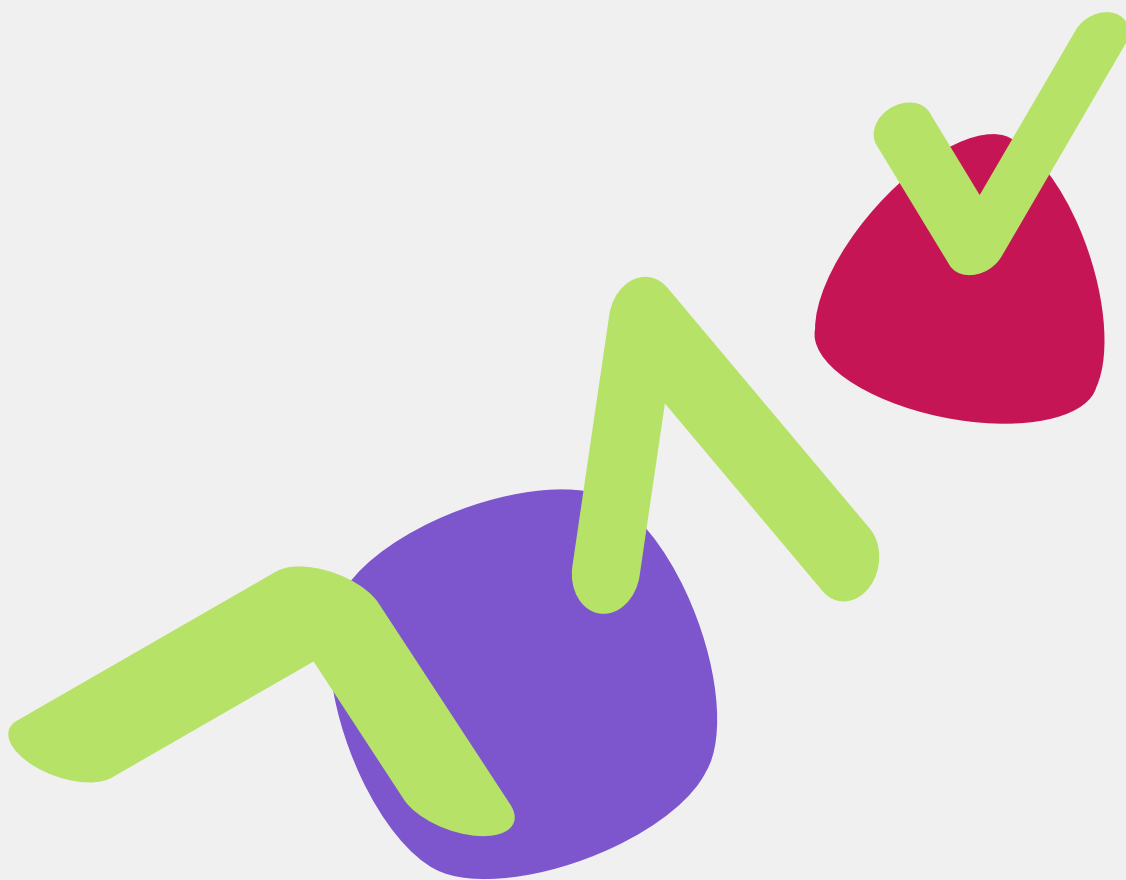


# Inclusive Playground Design Resource Library

Your guide to improving equal  
and equitable access and quality  
participation at playgrounds



A collaborative project by the University of Toronto's Faculty of Kinesiology and Physical Education, The Steadward Centre for Personal & Physical Achievement, and the Canadian Disability Participation Project 2.0.

# Navigating the Resource Library

## About the Resource Library

The Inclusive Playground Design Resource Library is your go-to resource for inclusive playground design. In this document, you will find information and considerations on playground design, tips and strategies for creating quality play experiences and research on inclusive play.

## How to use the Resource Library

All of the resources in this guide are helpful for anyone interested in creating inclusive playgrounds and quality play experiences. In this guide, the resources are organized into three overarching learning goals for users.

**I'm new to inclusive playgrounds or play experiences, and I would like to learn about what it means:**

### Suggested resources:

- [Developing evidence-informed strategies to foster quality participation on playgrounds](#)
- [Digital Comic: A Day for Play](#)
- [Play Finds a Way Through Inclusive Playgrounds: Final Research Report](#)
- [Evidence-Informed Recommendations for Designing Inclusive Playgrounds to Enable Participation for Children with Disabilities](#)



**I know what inclusive playgrounds and play experiences are, and I am ready to start designing my playground:**

**Suggested resources:**

- [Inclusive Playgrounds Playbook: A Playbook of Considerations and Strategies](#)
- [Evidence-Informed Recommendations for Designing Inclusive Playgrounds to Enable Participation for Children with Disabilities](#)
- [Developing Evidence-Informed Strategies to Foster Quality Participation on Playgrounds](#)

**I want to be sure I am offering inclusive play experiences:**

**Suggested resources:**

- [Quality Participation on Playgrounds Programmer Guide](#)
- [A Blueprint for Building Quality Participation on Playgrounds for Children with Disabilities](#)
- [Inclusive Play Leadership Resource](#)
- [The Playground Guide for Inclusive Play](#)



# Resource Library

## Inclusive Playgrounds Playbook: A Playbook of Considerations and Strategies

### This resource is for

- Community leaders
- Builders, developers, designers
- Schools
- Municipalities
- Parent committees
- Anyone building a playground

### What it is

This playbook provides considerations and strategies for creating playgrounds and surrounding environments that are inclusive. It includes ideas and tools to help with various aspects of a playground's development.

Check out and download the full [Inclusive Playgrounds Playbook](#).

Looking for more? The [“What makes a playground inclusive?” infographic](#) is a helpful tool that summarizes some of the information from the full Playbook.



# Evidence-Informed Recommendations for Designing Inclusive Playgrounds to Enable Participation for Children with Disabilities

## This resource is for

- Community leaders
- Builders, developers, designers
- Schools
- Municipalities
- Parent committees
- Anyone building a playground

## What it is

This resource highlights 13 recommendations and one promising practice for creating play spaces that are inclusive and welcoming to people of all ages and abilities. These recommendations have implications for how playgrounds should be designed to maximize usability and inclusiveness, and to uphold the right of children of all ages and abilities to play.

The [13 recommendations are available on the CDPP 2.0 website.](#)



# The Playground Guide for Inclusive Play

## This resource is for

- Play leaders
- Recreation and summer camp staff
- Teachers
- Education Assistants

## What it is

This resource is designed to support facilitated playground play with and for children who experience disabilities. It includes play ideas, suggested games, tips for modifying games and considerations for providing quality inclusive instruction.

Give the [Playground Guide for Inclusive Play](#) a read on the Steadward Centre's website now!



## Inclusive Play Leadership Resource

### This resource is for

- Play leaders
- Recreation and summer camp staff
- Teachers
- Education Assistants

### What it is

The Inclusive Play Leadership Resource is an online resource that helps leaders in children's physical activity and recreation create and lead inclusive play experiences for kids of all abilities. Learn how to support games and playground play that are engaging and meaningful for all participants.

Get started with the [Inclusive Play Leadership Resource](#) now.



# Developing Evidence Informed Strategies to Foster Quality Participation on Playgrounds

## This resource is for

- Anyone getting started in the design process

## What it is

This document summarizes the process that our playground research team undertook to develop 20 evidence-informed strategies to foster quality participation on playgrounds. Use this resource to learn more about the strategies used to foster quality participation on playgrounds, as well as how they were chosen.

Learn more about [Developing Evidence Informed Strategies to Foster Quality Participation on Playgrounds](#) here.



# A Blueprint for Building Quality Participation on Playgrounds for Children with Disabilities

## This resource is for

- Camp leaders
- Recreational program instructors
- Caregivers

## What it is

There are two versions of the Blueprint resource, [one for programmers](#), and [one for caregivers](#). These resources present 20 evidence-informed strategies designed to support quality participation on playgrounds for children with disabilities, based on [this framework](#).

Explore the Blueprints to discover practical tools and ideas for creating quality play experiences.



# Quality Participation on Playgrounds Programmer Guide

## This resource is for

- Camp leaders
- Recreational program instructors

## What it is

This one-page resource can be used to guide the facilitation of high-quality participation in play for children with disabilities. Follow the steps in this guide to develop your play philosophy, choose effective strategies, choose the right playground and create games. Use this resource alongside the [Quality Participation on Playgrounds Blueprint](#) to help identify specific strategies.

Use the [Quality Participation on Playgrounds Guide](#) now!



# Play Finds a Way Through Inclusive Playgrounds: Final Research Report

## This resource is for

- Anyone looking to learn more about our playground program of research

## What it is

A research report that summarizes the work our multidisciplinary research team put into the Play Finds a Way project, which supported the development of the [Blueprint for Building Quality Participation on Playgrounds for Children with Disabilities](#) and the [Inclusive Playgrounds Plabook](#).

Read the [research report](#) now.



## Digital Comic: A Day for Play

### This resource is for

- Anyone looking to learn more about inclusive playgrounds

### What it is

An illustrated story that shares the experiences of families at playgrounds designed to support disability inclusion. These comics were based on an academic article titled [Storying the inclusive playground experiences of families of disabled and non-disabled children](#).

[Check out the comics on the CDPP 2.0 website.](#)

